

**Observing Report VEGA 2016.12.12**  
**Fred, Orlagh (Calern) + Chris (Mountain)**

Config for the December Run

B1	B2	B3
-----		
E1(P1)	E2(P2)	W1(P2)
S2(P5)	S1(P4)	
	W2(P5)	

**SUMMARY**

**Summary of observations:**

V01 HD219314 S1S2 2 pts – v nice stable fringes  
V66 HD37202 E1E2 1pt W1W2 2 pts  
V66 HD4180 E1E2 1pt  
V43 HD43587 S2W2 1 pt  
V43 HD50890 W1W2 1 pt  
V50 HD103095 W1W2 3pts

**Summary of problems:**

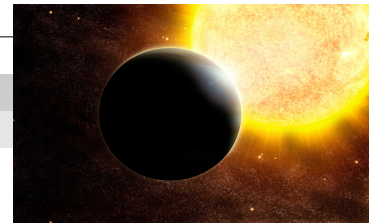
- Had to hold out till 03h00 for humidity to lower. Once we observed Seeing ~9cm for first half of night, then deteriorated. Some high clouds. But observed all night. Couldn't do V16 again!
- Logobs crashed several times during the night when I was saving it.

**01h30** High humidity so waiting, everything is AOK.

**02h45** Humidity might be lowering, Chris just asked us for target.

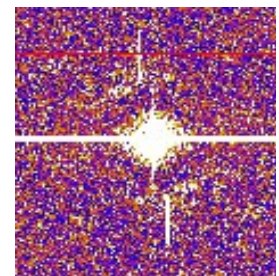
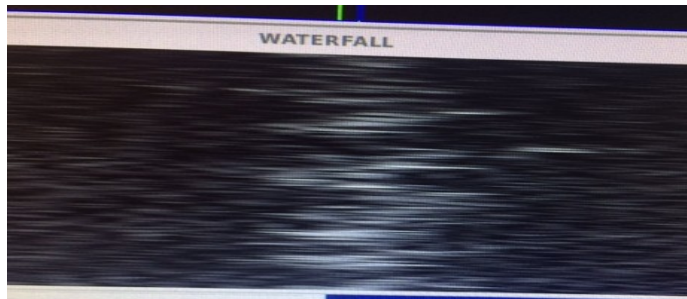
**1. V01 - EXOPLANETS – ROXANNE**

S2 – Pop5 – B1    S1 – Pop4 – B2



**03h00** Pointing at star. Aligning :) Maybe just maybe. We have fringes on target, so lets see with cal. Seeing is about 9cm on S2, but around 3cm on S1. 9-10 on W1 too. Problems with ConfServer. Restart.

**03h25** Recording on CAL 4 = HD 1279. **HD219134CAL4.2016.12.12.03.21** Fringes seen from block5 Seeing still around 9cm. SNR ~ 7. Waterfall quite stable on this K= 6.0!



**03h45** HD 219134, Peak is beautiful immediately! SNR=14, after 7 blocks. (figure right)  
**HD219134.2016.12.12.03.40**

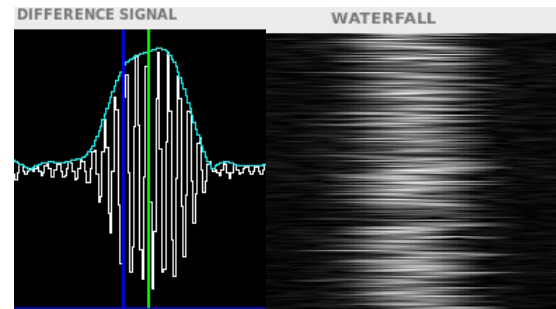
UT04h00 Tried CAL1, but no luck for tracking. We could see them, but not track. Back to cal4

UT04h15 Back to CAL4. **HD219134CAL4.2016.12.12.04.20**

UT04h30 **HD219134.2016.12.12.04.36** (figure right!)

UT04h55 **HD219134CAL4.2016.12.12.04.54**

Sp Cal. D\_R2720.2016.12.12.05.09



## 2. V66 - BE SURVEY - ANTHONY

E2 - Pop2 - B2 E1 - Pop1 - B1

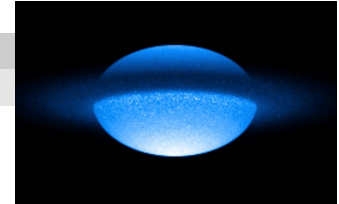
**HD37202:**

05h20 **HD37202E2E1.2016.12.12.05.15** 40 blocks

**HD4180:**

05h20 **HD4180E2E1.2016.12.12.05.45** 40 blocks

Sp Cal. D\_R2656.2016.12.12.06.17

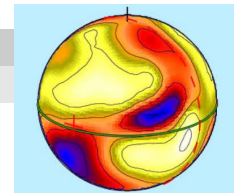


## 3. V16 - ROAP - KARINE

E2 - Pop2 - B2 E1 - Pop1 - B1 W1 - Pop2 - B3

**HD42659**

UT06h20 Going to try this. Start on brighter check star HD41695. We see fringes. Difficult. Abandon. Seeing deteriorated. Too faint for CLIMB today.



## 4. V43 - SEISMIC - ORLAGH

S2 - Pop5 - B1 W2 - Pop5 - B2

**HD43587**

UT07h00 Found fringes on target. Going to CAL1=HD46487

UT07h35 CAL1=HD46487. **HD43587CAL1W2S2.2016.12.12.07.02.**

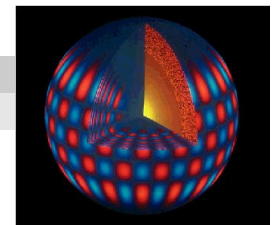
SNR=7,B10, r0 around 4cm, CLIMB not tracking great. But Peak is clear on VEGA

UT08h00 Target. **HD43587W2S2.2016.12.12.08.00.** OK

UT08h20 CAL1. **HD43587CAL1W2S2.2016.12.12.08.22.** Lost fringes around Block 15. Abort. Chris realigning, High clouds.

UT08h35 CAL1. **HD43587CAL1W2S2.2016.12.12.08.32.** 30 blocks.

Sp Cal. D\_R2700.2016.12.12.08.47



## 5. & 8. V66 - BE SURVEY - ANTHONY

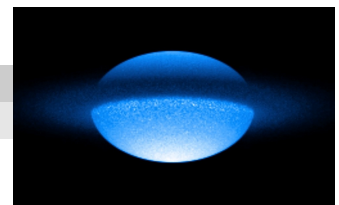
W2 - Pop5 - B2 W1 - Pop1 - B3

**HD37202:**

08h40 **HD37202W1W2.2016.12.12.08.52** 40 blocks

Sp Cal. D\_R2656.2016.12.12.09.22

UT12h05 **HD37202W1W2.2016.12.12.12.03** 30 blocks. Block 19 pas bon



## 6. V43 - SEISMIC - ORLAGH

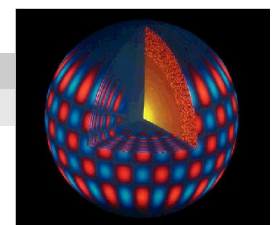
W2 - Pop5 - B2 W1 - Pop1 - B3

**HD50890**

UT09h30 CLIMB found fringes on target.

UT09h50 CAL1 = HD46487. **HD50890CAL1W2W1.2016.12.12.09.26.** Clouds

around. Central control crashed. Dont see fringes on CLIMB all the time. We see peak on VEGA. 40 blocks.



UT10h10 Target. [HD50890W2W1.2016.12.12.10.11](#). We see peak.

UT10h35 CAL1 = HD46487. [HD50890CAL1W2W1.2016.12.12.10.33](#).

Sp Cal. D\_R2720.2016.12.12.10.46

## 7. V50 - METAL-POOR – ORLAGH

W2 – Pop5 – B2    W1 – Pop1 – B3

### HD103095

UT10h55 CAL2 = HD103928.

[HD103095CAL2W2W1.2016.12.12.10.53](#). CloLogobs keeps crashing

UT 11h30 [HD103095W2W1.2016.12.12.11.25](#). Fringes OK, and peak is clear. Block 10 lost CLIMB fringes

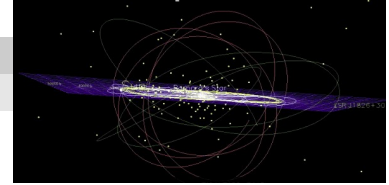
UT11h48 CAL1 = HD104179. [HD103095CAL1.W2W1.2016.12.12.11.47](#).

UT12h45 [HD103095W2W1.2016.12.12.12.41](#). See peaks on VEGA

UT13h10 [HD103095CAL2.W2W1.2016.12.12.13.05](#). See peaks on VEGA. CLIMB peaks not too stable. Looks like CAL1 is easier.

UT13h33 [HD103095.W2W1.2016.12.12.13.26](#). See pe

Sp Cal. D\_R2700.2016.12.12.13.52



END